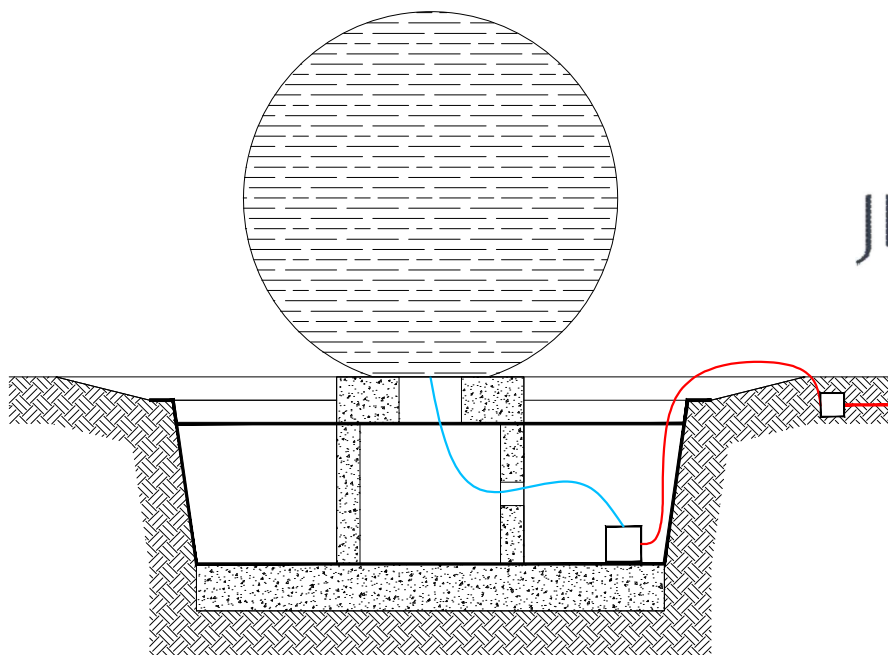
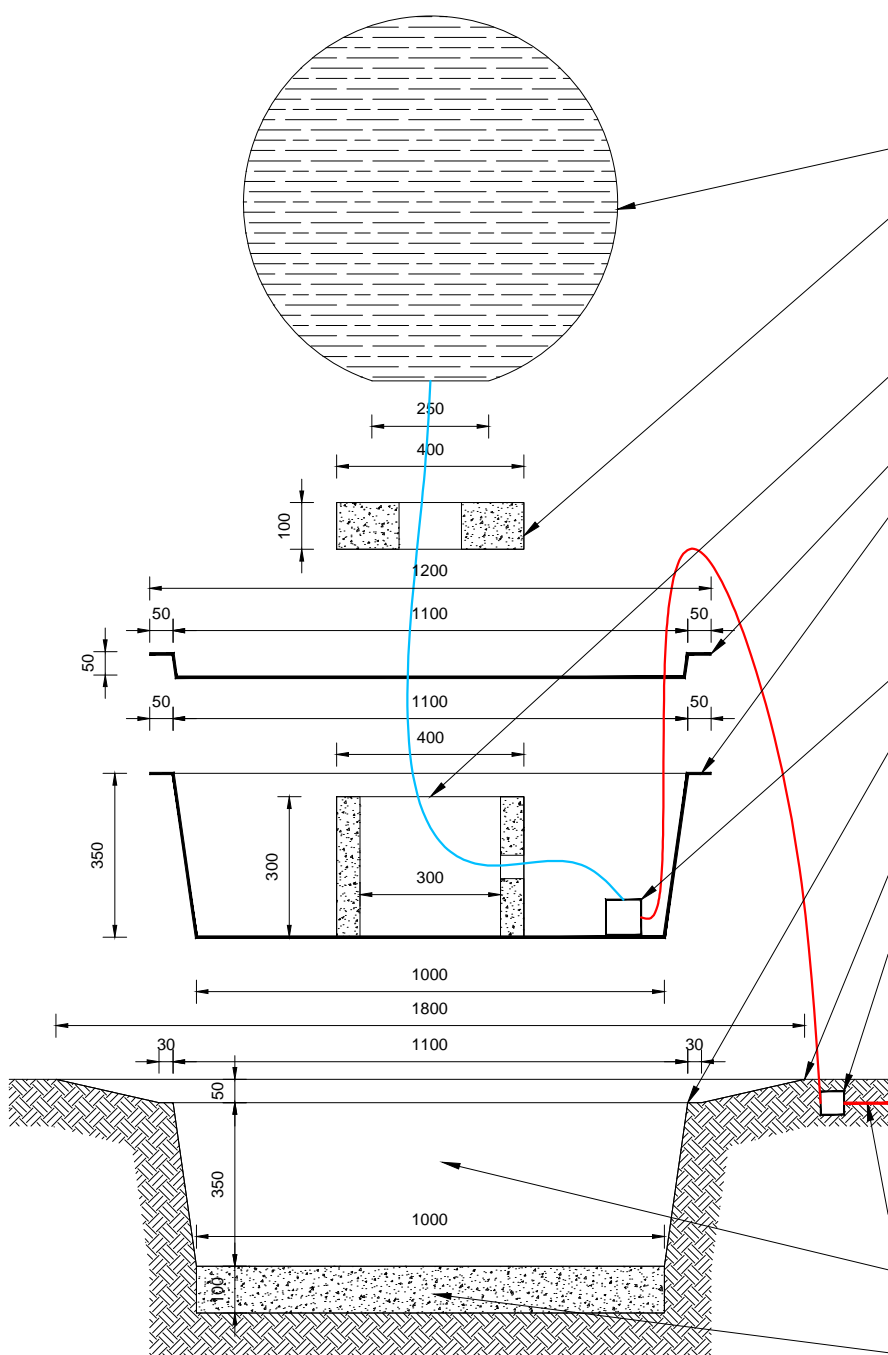


JEREMY HASTINGS



Sphere size	1.2m
Approximate sphere weight	480Kg
Sump reservoir and lid weight	21.2Kg
Volume of water in sump reservoir	333l + extra in run off area
Pump output	6,000lph
Pump power	85W
Pump spare cable length	8m



1.2m Watersphere™

100mm concrete collar
(height can be adjusted at installation
if required)

Watersphere™ internal concrete support

Sump reservoir lid

Sump reservoir
to be lowered in place
on top of concrete base.
Any gap to be backfilled.

Water pump

Sump and lid to sit flushed with bottom of
sand / cement concrete run off to allow room
for loose slate chipping to cover the sump lid

Finished level - total splash zone area 1.8m

"Wiska" junction box to be outside
the splash zone.
Connecting electrics to be carried
out by a qualified electrician.
It is recommended running armoured cable
to the edge of the sump reservoir
and then connecting to the pump cable
through using a "wiska" junction box.

Armoured cable

350mm round excavation hole to accommodate
the sump and lid

100mm of level and smooth concrete base